

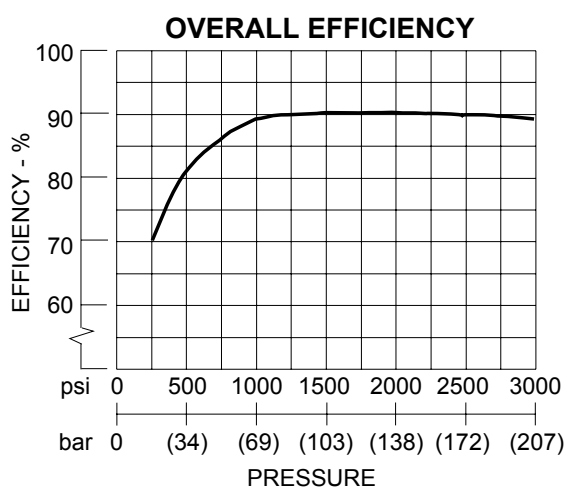
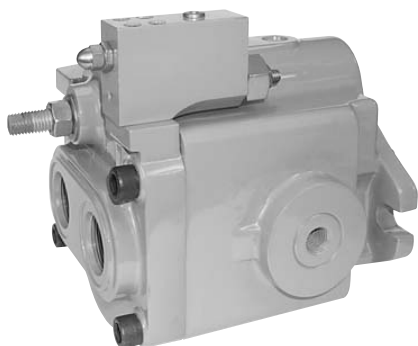


AXIAL PISTON PUMPS

VARIABLE DISPLACEMENT PRESSURE COMPENSATED

HPV29 SERIES

VARIABLE DISPLACEMENT PRESSURE COMPENSATED



TYPICAL PERFORMANCE SPECIFICATIONS

VOLUMETRIC DISPLACEMENT		cu.in. / rev.	3.78
		ml. / rev.	61.9
PUMP DELIVERY @ 1750 RPM	Theoretical	gpm	28.64
		lpm	108.25
OPERATING PRESSURES	Intermittent	psi	3500
		bar	241
	Continuous	psi	3000
		bar	207
	Minimum	psi	200
		bar	14
OPERATING SPEEDS	Maximum	rpm	see below
	Rated	rpm	1750
	Minimum	rpm	500
POWER INPUT @ (1750 RPM)		hp	64
rated flow & pressure		kw	48
CASE DRAIN FLOW @ deadhead & rated pressure		gpm	1.0
		lpm	3.8
MOUNTING FLANGE	Keyed shaft	SAE Type	"C" 2-Bolt
	Spline shaft	SAE Type	"C" 2-Bolt
SHIPPING WEIGHT	Rear Port	lbs.	86
		kg.	39.1
	Side Port	lbs.	102
		kg.	46.3
	Tandem	lbs.	111
		kg.	50.3

NOTES:

This pressure should comprise 10% or less of the total duty cycle & not exceed 6 consecutive seconds.
Pumps operating at less than 150 psi may overheat & shorten pump life.

CASE DRAIN & INLET PORT SPECIFICATIONS

	Maximum Case Pressure		Maximum Inlet Pressure		Minimum Inlet Pressure	
RPM	psi	bar	psi	bar	vacuum / pressure	vacuum / pressure
1800	10	0.69	50	3.4	6.12 in-Hg	155.5 mm-Hg
2050	7	0.48	50	3.4	6.12 in-Hg	155.5 mm-Hg
2100	5	0.34	50	3.4	4.99 in-Hg	126.7 mm-Hg
2200	5	0.34	50	3.4	2.55 in-Hg	64.8 mm-Hg
2300	5	0.34	50	3.4	0	0
2400	5	0.34	50	3.4	1.31 psi	.09 bar

PRESSURE & VOLUME ADJUSTMENT SENSITIVITY

Pressure Adjustment	Pressure Change per Turn	650 psi	44.8 bar
Volume Adjustment	Flow Change per Turn	2.8 gpm	10.6 lpm
	Maximum Torque	45 in-lbs.	5.1 Nm

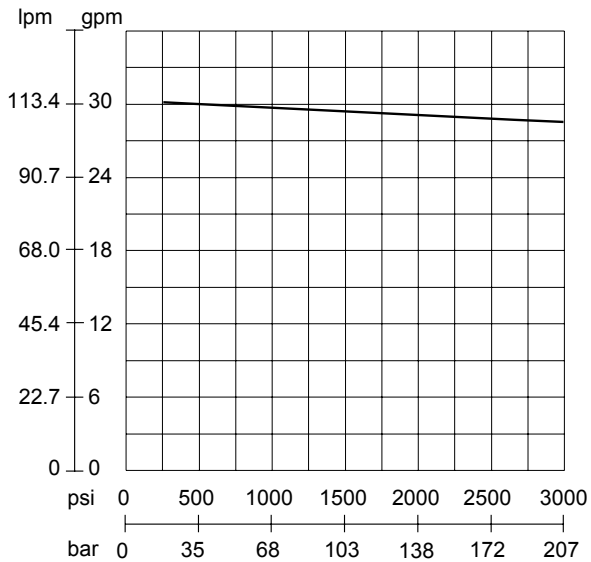


AXIAL PISTON PUMPS

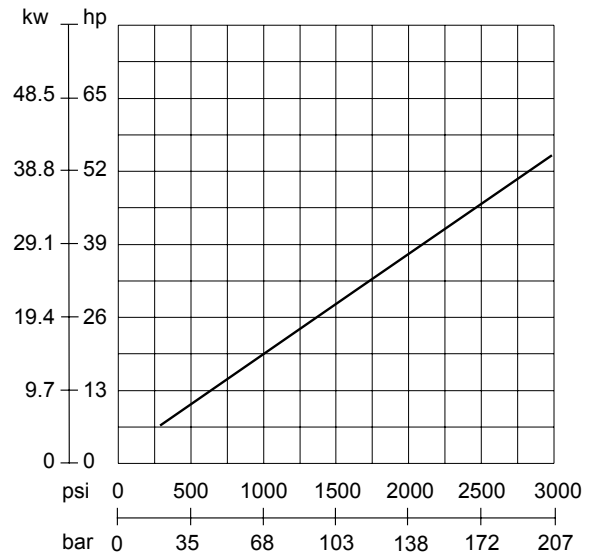
VARIABLE DISPLACEMENT PRESSURE
COMPENSATED

HPV29 SERIES

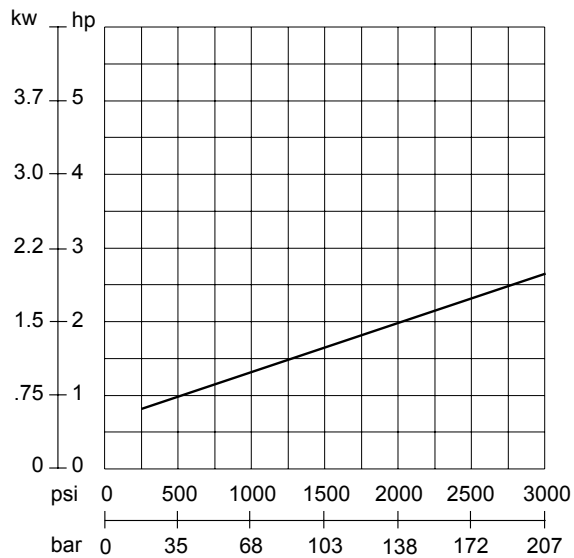
FLOW vs PRESSURE



INPUT POWER @ FULL FLOW

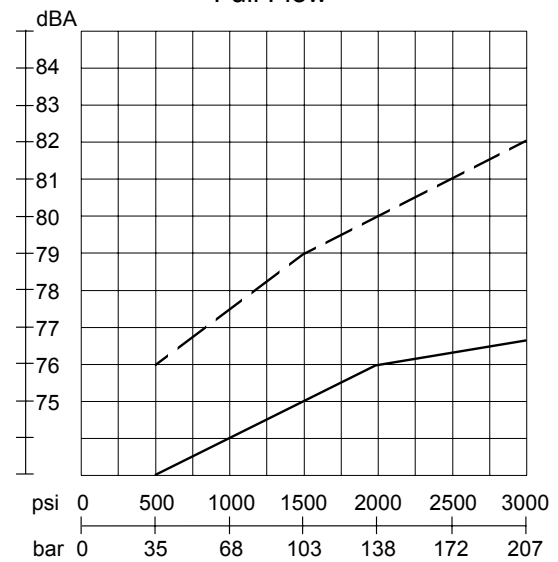


INPUT POWER @ ZERO FLOW



NOISE LEVEL

Zero Flow = —————
Full Flow = - - - - -



THE ABOVE DATA IS TYPICAL PERFORMANCE AT 1750 RPM.

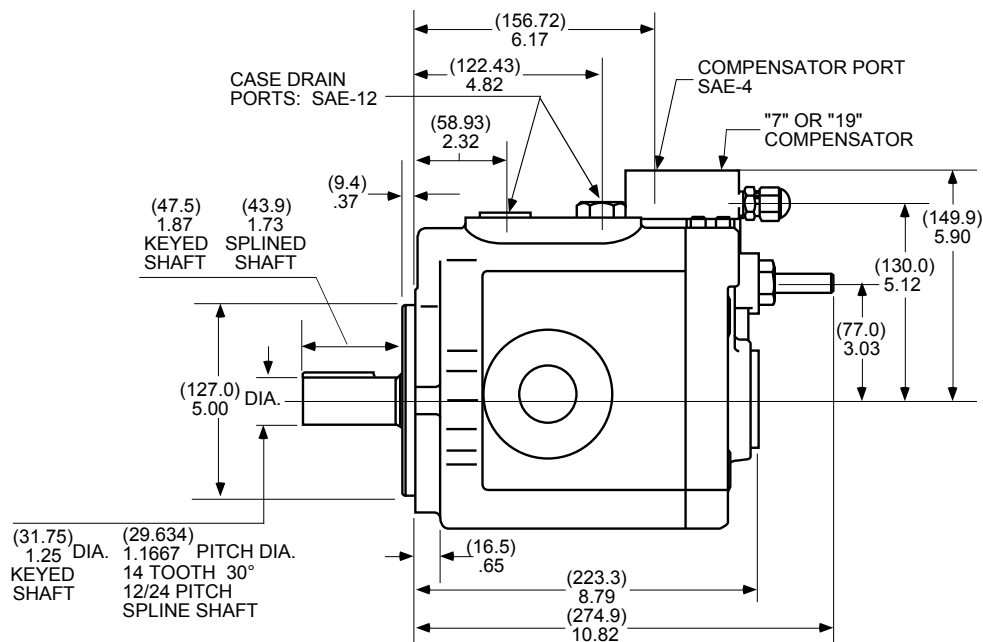
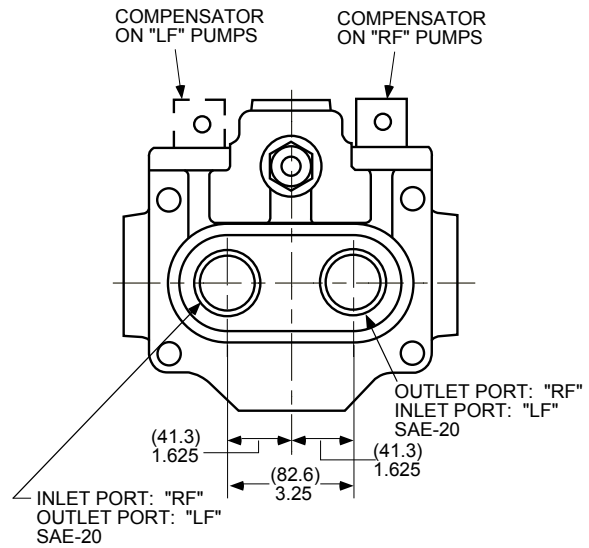
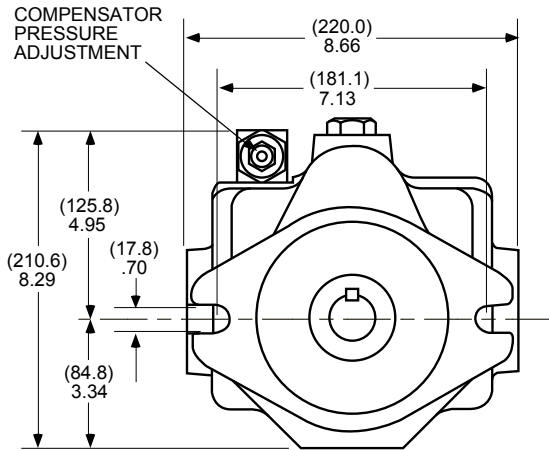


AXIAL PISTON PUMPS VARIABLE DISPLACEMENT PRESSURE COMPENSATED

HPV29 SERIES

INSTALLATION DIMENSIONS -- REAR PORTS

(MILLIMETERS)
INCHES



NOTE: KEY SIZE = 5/16" x 1.25".

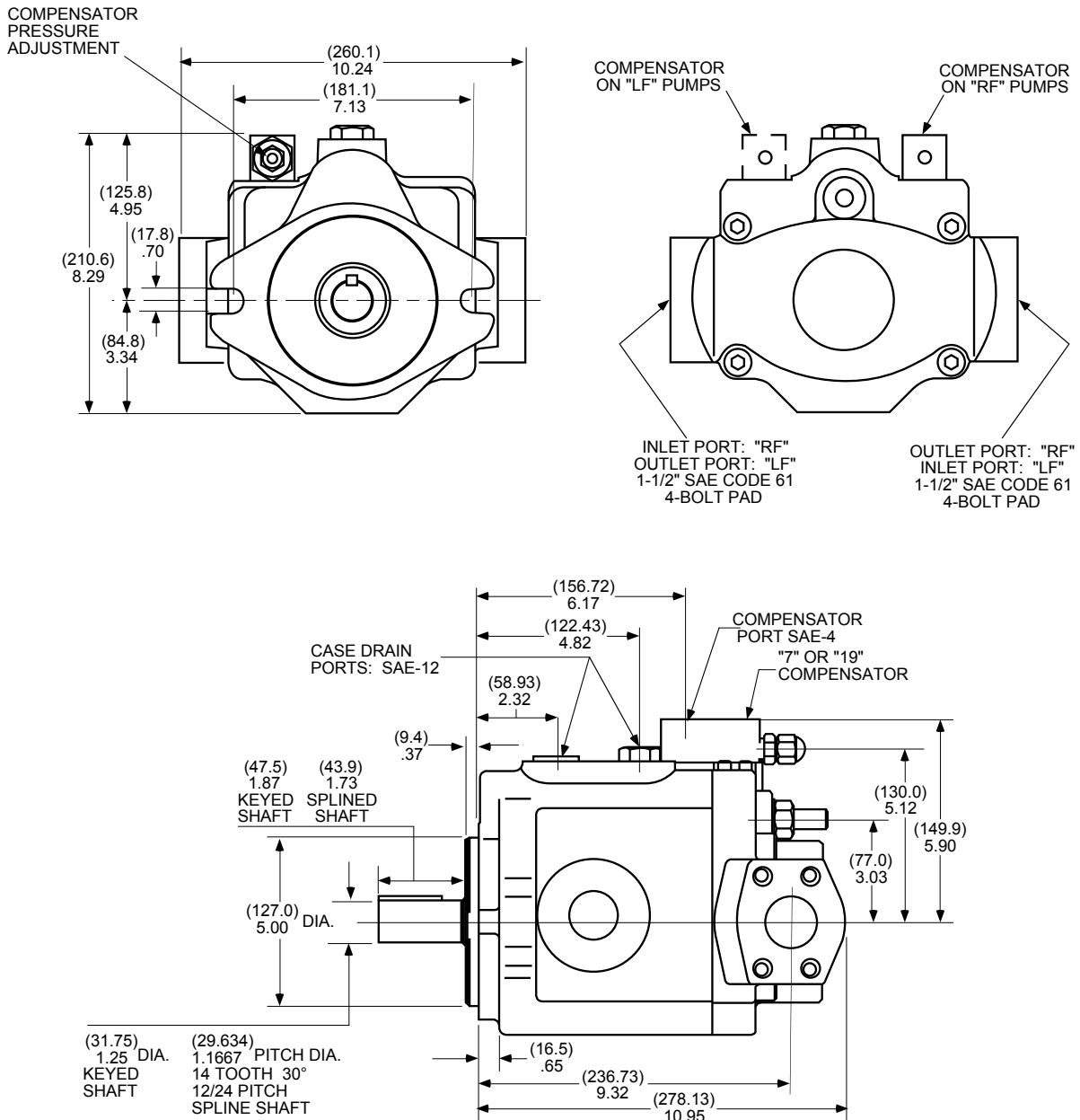


AXIAL PISTON PUMPS VARIABLE DISPLACEMENT PRESSURE COMPENSATED

HPV29 SERIES

INSTALLATION DIMENSIONS -- SIDE PORTS

(MILLIMETERS)
INCHES





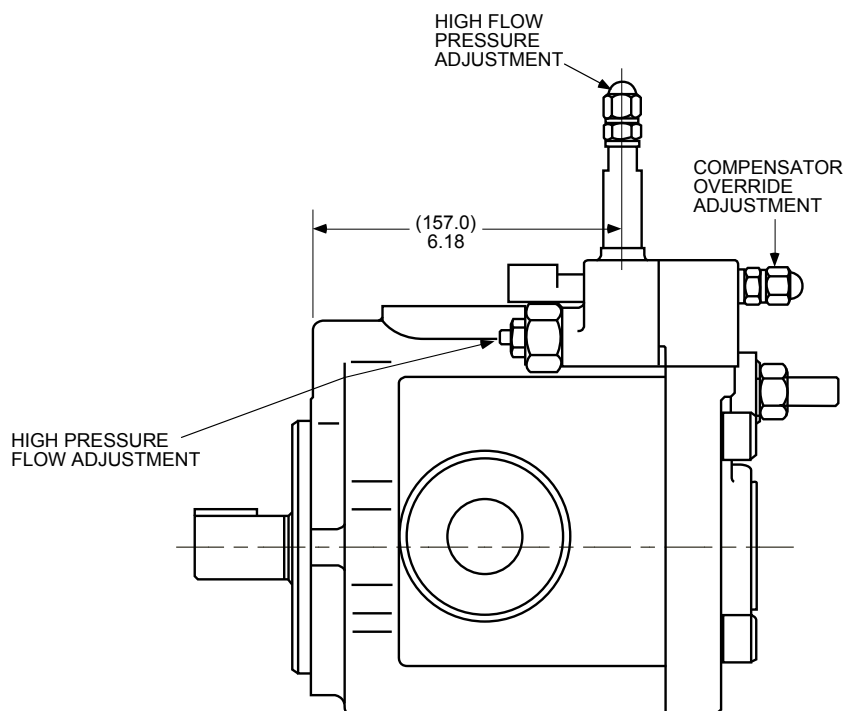
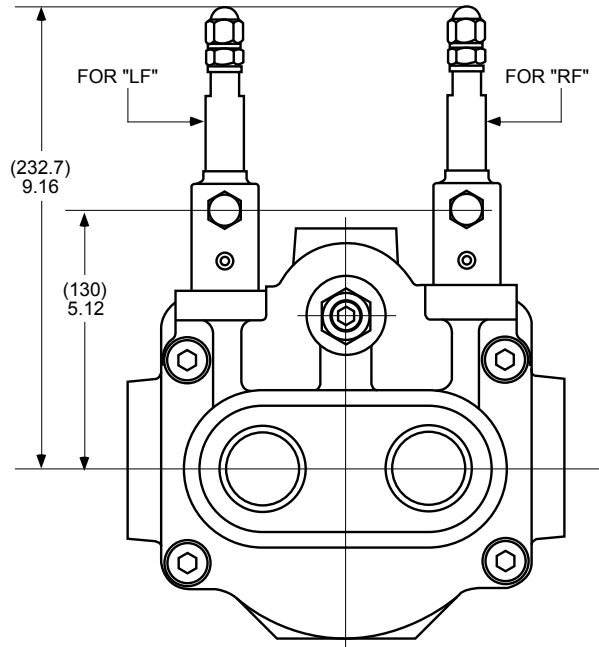
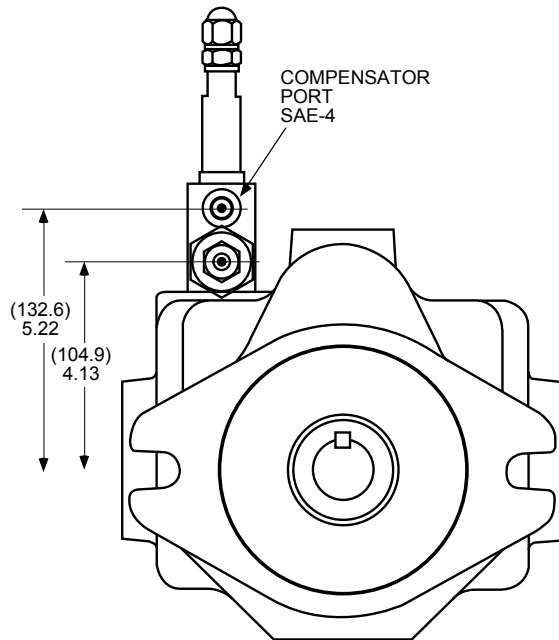
AXIAL PISTON PUMPS

VARIABLE DISPLACEMENT PRESSURE
COMPENSATED

HPV29 SERIES

HORSEPOWER LIMITING DIMENSIONS

(MILLIMETERS)
INCHES



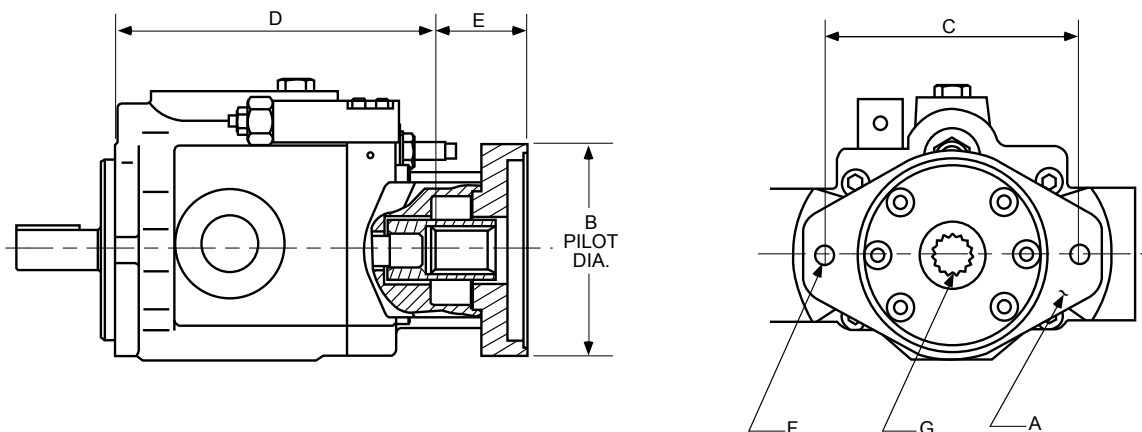


AXIAL PISTON PUMPS VARIABLE DISPLACEMENT PRESSURE COMPENSATED

HPV29 SERIES

CODES 21, 22, 23 & 31 -- TANDEM OPTIONS

(MILLIMETERS)
INCHES



NOTE: HPV-29 WITH THE CODE "23" OPTION PICTURED ABOVE.
OTHER OPTIONS WILL APPEAR DIFFERENTLY.

CODE	SAE 2-BOLT MTG PAD	DIMENSIONS					INTERNAL 30° INVOLUTE SPLINE	MAX. HP RATING *	MAX. TORQUE RATING *
		B	C	D	E	F			
21	"A" FLANGE	(82.6) 3.25	(106.17) 4.18	(286.0) 11.26	(58.42) 2.30	3/8-16 UNC	9 TOOTH 16/32 PITCH 0.5625" PITCH DIA.	8.5 HP @ 1750 RPM	306 lb. in.
22	"B" FLANGE	(101.7) 4.00	(146.1) 5.75	(290.07) 11.42	(62.48) 2.46	1/2-13 UNC	13 TOOTH 16/32 PITCH 0.8125" PITCH DIA.	28.1 HP @ 1750 RPM	1013 lb. in.
23	"C" FLANGE	(127.0) 5.00	(181.10) 7.13	(290.07) 11.42	(62.48) 2.46	5/8-11 UNC	14 TOOTH 12/24 PITCH 1.1667" PITCH DIA.	43.8 HP @ 1750 RPM	1576 lb. in.
31	"A-B" FLANGE	(82.6) 3.25	(106.17) 4.18	(286.0) 11.26	(58.42) 2.30	3/8-16 UNC	13 TOOTH 16/32 PITCH 0.8125 PITCH DIA.	28.1 HP @ 1750 RPM	1013 lb. in.

* THIS IS THE MAXIMUM HORSEPOWER OR TORQUE THAT CAN BE
TRANSMITTED THROUGH THE SHAFT COUPLING TO THE REAR PUMP.

NOTE: CODE 5S SIDE PORT OPTION MUST BE
ORDERED WITH ALL TANDEM OPTIONS.



AXIAL PISTON PUMPS

VARIABLE DISPLACEMENT PRESSURE COMPENSATED

HPV29 SERIES

ORDERING INFORMATION

HPV-29B30 — ☐ — ☐ — ☐ — ☐ — ☐ — ☐ — ☐ — ☐

SELECT ONE: SELECT ONE: SELECT ONE: SELECT ONE: SELECT ONE: SELECT ONE: DESIGN

ROTATION

CODE	DESCRIPTION
RF	CW ROTATION
LF	CCW ROTATION

SEALS

CODE	TYPE
O	BUNA N
P	VITON

SHAFT

CODE	DESCRIPTION
OMIT	STRAIGHT KEY
12	MALE SPLINE

PORTS

CODE	DESCRIPTION
1R	SAE O-RING THREAD REAR PORTS
5S	SAE 4 BOLT FLANGE SIDE PORT

TANDEM

CODE	DESCRIPTION
OMIT	NO TANDEM OPTION
21*	SAE "A" REAR PAD
22*	SAE "B" REAR PAD
23*	SAE "C" REAR PAD
31*	SAE "A" REAR PAD WITH SAE "B" SPLINE COUPLING

COMPENSATOR

CODE	DESCRIPTION
OMIT	STD. PRESSURE COMPENSATOR
7	REMOTE PRESSURE
19	LOAD SENSE
26	H. P. LIMITING

* NOTE CODE:5S SIDE PORT OPTION MUST BE ORDERED WITH ALL TANDEM OPTIONS.

TYPICAL ORDERING CODE: HPV-29B30-RF-O-1R