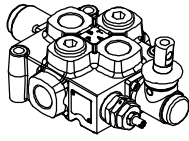
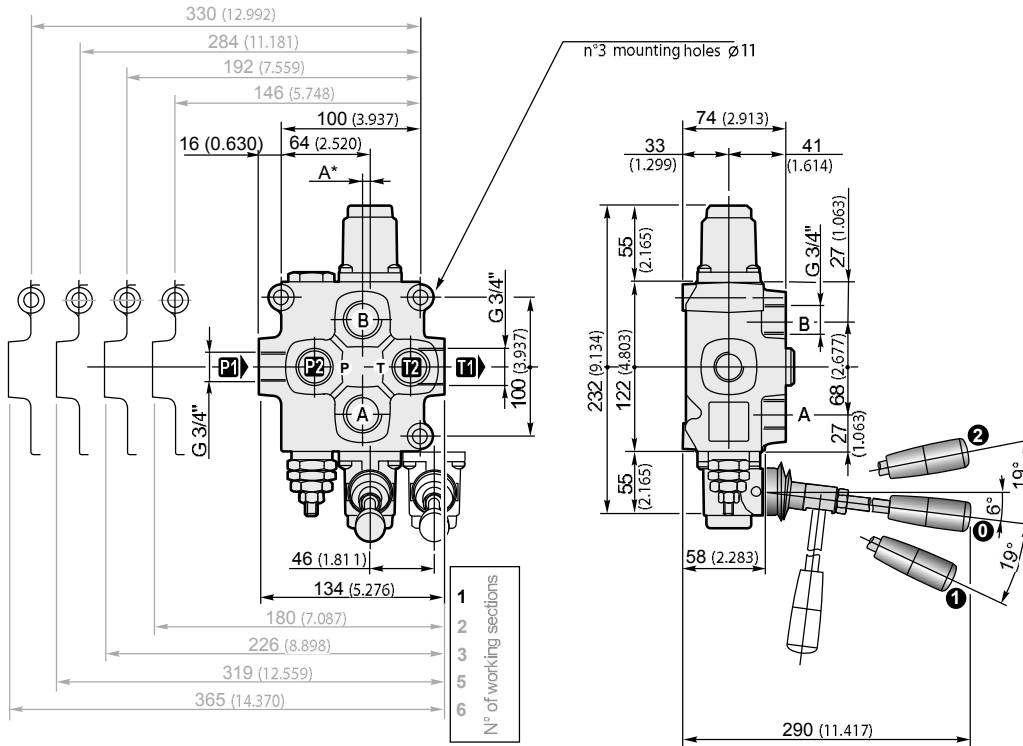


Q95 Series

Mono-Block Directional Control Valve



(Standard)
Control and positioner Aluminium



* A = 5.5 for 1 working section, A = 0 for 2-3-5-6 working section

Q95 - F7S R250 - 2x 103 A1 M1 - F3D - 12V - 2E

1 2 3 4 5 6 7 8 9

Available ports

| Ports | BSP (standard) | SAE |
|-------|----------------|---------------------------|
| P1 | G 3/4" | 1" 1/16" - 12 UN (SAE 12) |
| P2 | G 3/4" | 1" 1/16" - 12 UN (SAE 12) |
| A-B | G 3/4" | 1" 1/16" - 12 UN (SAE 12) |
| T1 | G 3/4" | 1" 1/16" - 12 UN (SAE 12) |
| T2 | G 3/4" | 1" 1/16" - 12 UN (SAE 12) |

Carry-over plug (on T1 port)

| | | T1 | X |
|--|--------|---------------------------|------------------------|
| | G 3/4" | 1" 1/16" - 12 UN (SAE 12) | G 3/4" |
| | | | 7/8" - 14 UNF (SAE 10) |

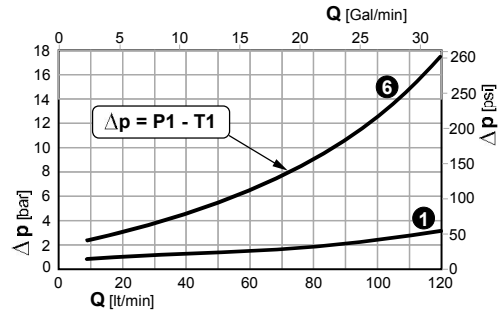
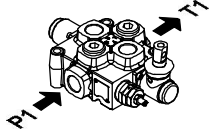
Dimensions in: mm (inch)

Q95 Series

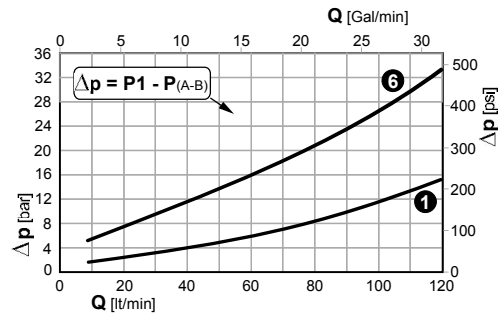
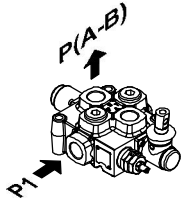
Mono-Block Directional Control Valve



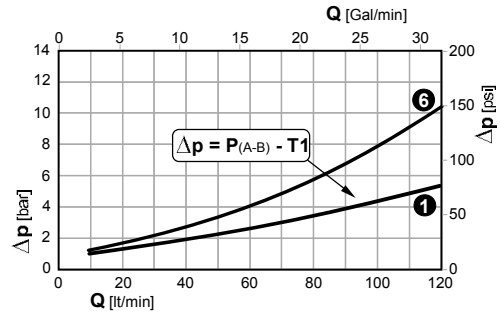
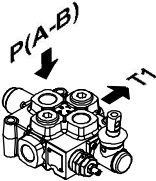
Pressure drop with spool in neutral position
(Δp depending on the number of the crossed sections)



Pressure drop with spool in working position
(Δp depending on the number of the crossed sections)

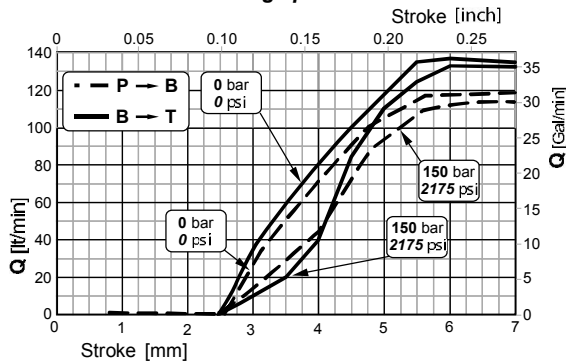


Pressure drop with spool in working position
(Δp depending on the number of the crossed sections)

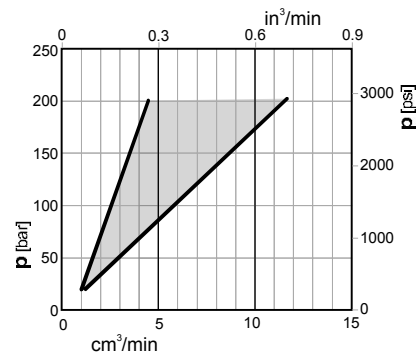


1 6 Sections

Metering spool



Spool leakage



NOTE. Performance curves measured using spool 103 type .

Q Series

Mono-Block Directional Control Valve



Inlet Section

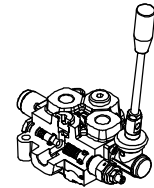
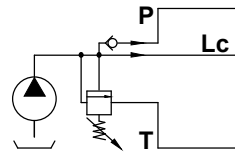


2 - Inlet section type

| | | Q35 | Q15 | Q25 | Q45 | Q65 | Q75 | Q95 |
|------------|---|-----|-----|-----|-----|-----|-----|-----|
| F1S | Inlet section with check (VR) and relief valves (VLP) | | | • | • | | • | • |
| F2S | Inlet sections with check valve VR | | | • | • | | • | • |
| F7S | Inlet section with relief valve VLP | • | • | • | • | • | • | • |
| F8S | Inlet section without valves VLP and VR | • | • | • | • | • | • | • |

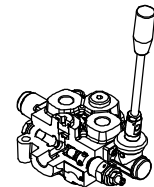
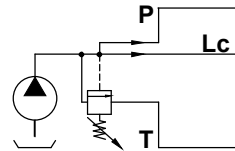
F1S *F1S/SAE*

Inlet section with check (VR) and relief valves VLP



F7S

Inlet section with relief valve VLP



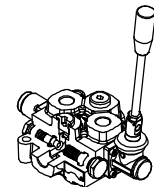
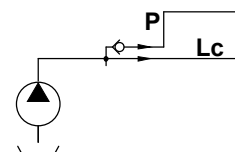
3 - Type of spring and valve setting

If valve VLP is installed (inlet section F1S and F7S), specify the type of spring (B, N or R) and its pressure setting.
If omitted, spring N with a 150 bar setting will be installed

| | | white spring | black spring | red spring |
|------------|---------------------------------|---------------------------------|---------------------------|----------------------------|
| R | Type of spring for relief valve | B | N | R |
| | | Calibration fields bar (psi) | | |
| 250 | VLP Setting | 10 ÷ 80 (145 ÷ 1160) | 81 ÷ 200 (1175 ÷ 2900) | 201 ÷ 380 (2915 ÷ 5510) |

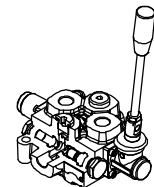
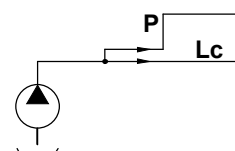
F2S

Inlet sections with check valve VR



F8S

Inlet section without valves



Q Series

Mono-Block Directional Control Valve



Working section



4 - Spool type

Spools

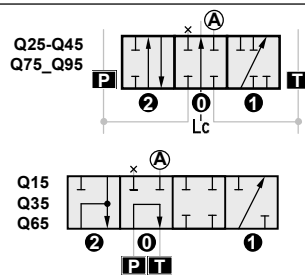
| | | Q35 | Q15 | Q25 | Q45 | Q65 | Q75 | Q95 |
|--------------|--|-----|-----|-----|-----|-----|-----|-----|
| 101 | Single acting in A port | • | • | • | • | • | • | • |
| 102 | Single acting in B port | • | • | • | • | • | • | • |
| 103 | Double acting A and B closed in 0 position | • | • | • | • | • | • | • |
| 103RN | Double acting with negative overlap | • | | | | | | |
| 106 | Double acting, ports closed in 0 position | | | • | • | | • | • |
| 107 | Double acting, A to T and B closed in 0 position | | | • | • | | • | • |
| 108 | Double acting, B to T and A closed in 0 position | | | • | • | | • | • |
| 109 | Single acting in A, A to T in 0 position | | | • | • | | • | • |
| 110 | Single acting in B, B to T in 0 position | | | • | • | | • | • |
| 111 | Double acting, A and B to T in 0 position | • | • | • | • | • | • | • |
| 114 | Double acting, A and B to T and through passage closed in 0 position | | | • | • | | • | • |
| 116* | Double acting with 4th position floating | | • | • | • | | • | • |
| 126* | Double acting with 4th position floating | | • | • | • | | • | • |

* Limitations

| Spools | Applicable with: | |
|------------|--|------------|
| | Control | Positioner |
| 116 | A1-Z1 / A2-Z1 / A4-Z1 / A6-Z1 / A8-Z1 | R8 |
| 126 | A1 / A2 / A4 / A5 / A6 / A8 / SL / SLA15 / A15 / A16 | R10-Z1 |

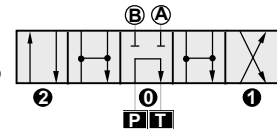
101

Single acting in A port



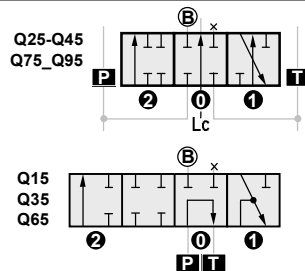
103RN

Double acting with negative overlap



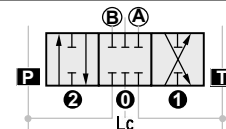
102

Single acting in B port



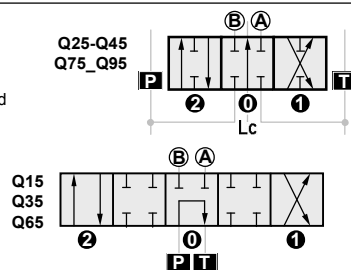
106

Double acting, ports closed in 0 position



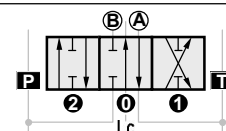
103

Double acting, A and B closed in 0 position



107

Double acting, A to T and B closed in 0 position

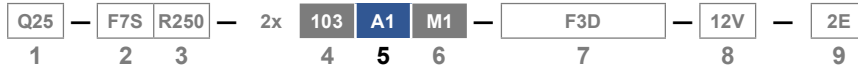


Q Series

Mono-Block Directional Control Valve



Working section



5 - Control type

| | | Q35 | Q15 | Q25 | Q45 | Q65 | Q75 | Q95 |
|---------------|---|-----|-----|-----|-----|-----|-----|-----|
| A1 | Hand control with standard lever | • | • | • | • | • | • | • |
| A1/Z1* | Version with spacer kit for installation of spool 116 | | • | • | • | | • | • |
| A2 | Hand control with standard lever mounted rotated 180° | | • | • | • | • | • | • |
| A2/Z1* | Version with spacer kit for installation of spool 116 | | • | • | • | | • | • |
| A3* | Cap replacing hand control with lever | | | • | • | • | • | • |
| A4 | Direct control connection on spool for stiff remote control | | | • | • | • | • | • |
| A4/Z1* | Version with spacer kit for installation of spool 116 | | | • | • | | • | • |
| A5 | Direct control connection on spool with spherical end (Control to be used for positioning M4 (2-1)) | • | | • | • | • | • | • |
| A6 | Direct control connection on spool eye end | • | | • | • | • | • | • |
| A6/Z1* | Version with spacer kit for installation of spool 116 | | | • | • | | • | • |
| A8 | Direct connection on spool for remote flexible control | | | • | • | • | • | • |
| A8/Z1* | Version with spacer kit for installation of spool 116 | | | • | • | | • | • |
| C1* | Flexible cable | | | • | • | | • | • |
| SL* | Remote control | | | • | • | | • | • |
| SLA15* | Remote dual axis control for simultaneous operation of two spools | | | • | • | | • | • |

* Limitations

| Control | Applicable with: | |
|--------------|---|-------|
| | Control | Spool |
| A3 | M1-U1 / M2-U1 / M3-U1 / M1-U2 / M2-U2 / M3-U2 / D2 / P1-N / P1-NP / D3 A8 / M1U2 - M2U2 - M3U2 | All |
| C1 | | |
| SL | | |
| SLA15 | | |

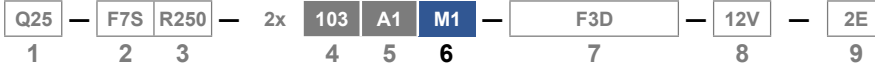
| Control | Applicable with: | |
|--|------------------|-------|
| | Positioner | Spool |
| A1/Z1 A2/Z1 A4/Z1 A6/Z1 A8/Z1 | R8 | 116 |

Q Series

Mono-Block Directional Control Valve

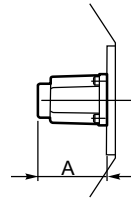
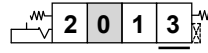


Working section

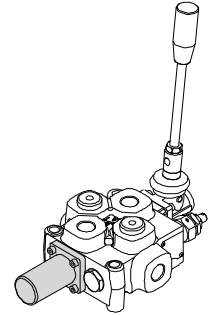


R8

Two positions (1 and 2) with spring return centred in 0 position.
(3) 4th position floating with detent.
(Mounting with Z1 side control and spool 116)

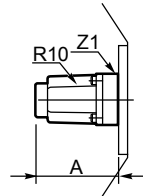
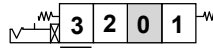


| | A |
|-----------|-----------------|
| Q15 | 43 (1.693) |
| Q25 - Q45 | 56.5 (2.224) |
| Q65 | 75 |
| Q75 - Q95 | (2.953) |

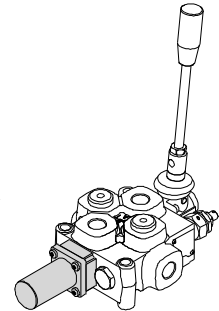


R10/Z1

Two positions (1 and 2) with spring return centred in 0 position
(3) 4th position floating with detent.
(Mounting with spool 126)

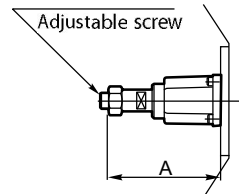
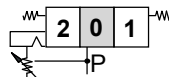


| | A |
|-----------|---------------|
| Q25 - Q45 | 70 (2.756) |
| Q75 - Q95 | 92 (3.622) |



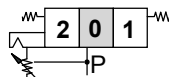
R1K

3 Position control, detent in 1 pos.
with automatic adjustable release.
Available with spool code 103 and 111 only



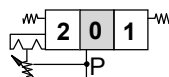
R2K

3 Position control, detent in 2 pos.
with automatic adjustable release.
Available with spool code 103 and 111 only

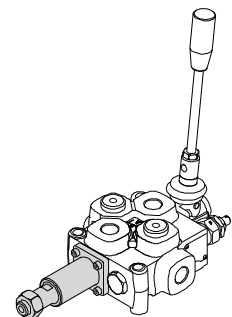


R3K

3 Position control, detent in 1 and 2' pos.
with automatic adjustable release.
Available with spool code 103 and 111 only



| | A | | |
|-----------|-----------------|-----------------|-----------------|
| | R1K | R2K | R3K |
| Q25 - Q45 | 91.5 (3.602) | 91.5 (3.602) | 91.5 (3.602) |
| Q75 - Q95 | 106 (4.173) | 106 (4.173) | 106 (4.173) |



Dimensions in: mm (inch)